



上海政法學院

Shanghai University of Political Science and Law

# Incoming Exchange at SHUPL



[www.shupl.edu.cn](http://www.shupl.edu.cn)



## Program Overview

We are happy that you are interested in attending Shanghai University of Political Science and Law (SHUPL) as an exchange student. SHUPL attaches great importance to the combination of teaching and research with social development and economic construction.

As the campus is located near Sheshan Hill, a national tourist resort in Shanghai, the beautiful scenery brings the name of “Garden Campus at the north of Sheshan Hill” to SHUPL. We welcome students nominated by one of our partner institutions to study for one semester or a full academic year here.

Currently, the semester dates of Academic Year 2021-2022 have not been decided. For your references, the semester dates of AY 2020-2021 are as follows:

2020 Fall: September 21, 2020 – January 19, 2021

2021 Spring: March 1, 2021 – June 23, 2021

## Programmatic Support

The International Affair Office and the International Student Office works with SHUPL's partner institutions and their nominated incoming exchange students before, during, and after application. The International Student Office also provides administrative support for students after they arrive on campus. All incoming exchange students have access to the resources and support offered by SHUPL International Student Office, which includes issuance of immigration documents, international students' orientation, and cultural activities and programming throughout the academic year.





## Academics Courses

Exchange students are eligible to register for any courses that other international students can register for as follows. We expect to have all courses below for every spring and fall semester, but the arrangements will be decided according to the actual circumstances of the semester.

序号 No.	课程类 Course category	课程名称	Course Title	授课语言 Language of instruction
1	语言课程 Language Courses	汉语综合 (1-4)	Comprehensive Chinese (1-4)	汉语 Chinese
2		汉语听力 (1-4)	Chinese listening (1-4)	汉语 Chinese
3		汉语口语 (1-3)	Chinese speaking (1-3)	汉语 Chinese
4		汉语阅读 (1-3)	Chinese reading (1-3)	汉语 Chinese
5		汉语写作 (1-2)	Chinese writing (1-2)	汉语 Chinese
6		汉字 (1-2)	Chinese character (1-2)	汉语 Chinese
7		高级综合 (1-2)	Advanced comprehensive Chinese (1-2)	汉语 Chinese
8		高级听力 (1-2)	Advanced Chinese listening (1-2)	汉语 Chinese
9		高级口语 (1-2)	Advanced Chinese speaking (1-2)	汉语 Chinese
10		高级写作 (1-2)	Advanced Chinese writing (1-2)	汉语 Chinese
11		HSK四级辅导	HSK 4 tutorials	汉语 Chinese
12	通识课程 General Electives Courses	中国历史故事	Chinese Historical Stories	汉语 Chinese
13		中国文学作品中的传统文化	Traditional Culture in Chinese Literature	汉语 Chinese
14		当代中国社会变迁	The Revolution of Modern China Society	汉语 Chinese
15		中国传统文化专题	Chinese Traditional Culture	汉语 Chinese
16		国际商务礼仪	International Business Etiquette	汉语 Chinese
17		地缘经济学	Geo-economics	汉语 Chinese
18		中国近代史	Modern Chinese History	汉语 Chinese
19		中国概况 (1-2)	Introduction of China (1-2)	双语 Bilingual
20		中国书法	Chinese Calligraphy	双语 Bilingual
21		汉字的起源与演变	The Origin and Revolution of Chinese Characters	双语 Bilingual
22		亚太地区政治与经济	Political Economy in Asia-Pacific	全英文 English



序号 No.	课程类 Course category	课程名称	Course Title	授课语言 Language of instruction
23	通识课程 General Electives Courses	会计学原理	Accounting	全英文 English
24		跨文化交际	Intercultural Communication	全英文 English
25		中国宪法与行政法	Chinese Constitution Law and Administrative Law	全英文 English
26		国际贸易实务	International Trade Practice	全英文 English
27		知识产权法	Intellectual Property Law	全英文 English
28		刑法学分论	Criminal Law—Specific provisions	全英文 English
29		国际经济法	International Economic Law	全英文 English
30		中国金融市场	China Financial Markets	全英文 English
31		国际商务谈判	International Business Negotiation	全英文 English
32		经济学原理	Principles of Economics	全英文 English
33		物流管理	Logistics Management	全英文 English
34		国际金融	International Finance	全英文 English
35		国际贸易模拟	Analogue International Trade	全英文 English
36		微观经济学	Microeconomics	全英文 English
37		财政学	Financing	全英文 English
38		国际贸易理论	Theory of International Trade and Business	全英文 English
39		国际贸易实务	International trade practice	全英文 English
40		国际结算	International settlement	全英文 English
41		中国刑罚制度概要	Overview of Chinese Penal System	全英文 English
42		国际货物买卖法	Law of the International Sale of Goods	全英文 English







## Facilities

At SHUPL, all teaching & learning facilities are accessible to exchange students, including teaching buildings, the library, and modernized labs.

### Labs



### The Library



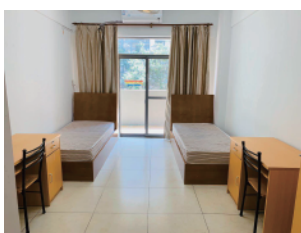
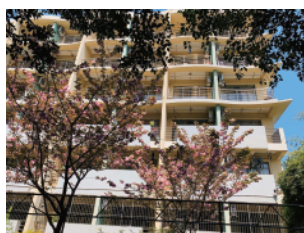
### Teaching Buildings & Classrooms





## Accommodations

### Housing



Living on campus is optional to international students at SHUPL. Living with other students supports the academic experience, furthering personal growth and development. Incoming exchange students may apply to live in one of SHUPL's on-campus international student accommodations.

### Campus Dining

At SHUPL, students enjoy a variety of foods from 6 dining halls on campus, meeting needs of delicacy, nutrition and religious beliefs.







## Extra-Curricular Activities

International Student Office holds extra-curricular activities every year, welcoming all international and domestic students to join for wonderful cultural experiences. Students gain knowledge, friendship, and deeper understanding of each other from the activities.



Dumplings Making around Chinese New Year



Basketball Competition



## Culture Fair



Dragon-Boat Race



New Year's Eve Gala



## Fees & Tuition

Fees	RMB
Application fee	400
Undergraduate program	10750/ semester
Postgraduate program	11500/ semester
Accommodation	Around 30/ day
Insurance premium	1000/ academic year

## Scholarships

Please visit the website of Education Section of the Embassy of the People's Republic of China in your home country for scholarships information.

## Application

### Required Documents

Documents	Copy	Remark
International Students Admission Application Form	1	
Academic transcripts (written in Chinese or English)	1	Transcripts in languages other than Chinese or English must be attached with notarized Chinese or English translations.



Study or research plan in China	1	Applicants for graduate programs, and should not be less than 1000 words, either in Chinese or English
Guarantee letter of financial support or personal bank statement	1	Shall be signed by guarantor, the guarantor’s passport personal information page scanning edition shall be provided
Foreigner Physical Examination Form	1	
Photocopy of the passport page	1	
Passport size photos	2	
Certificate of no criminal record	1	Certificate from a public security authority or from your home institution, in Chinese or English
Learning certificate at (leaving school certificate)	1	International students studying in China shall provide
Temporary resident permission		
Note: please download the above forms at: <a href="http://iso.shupl.edu.cn/english/2020/0323/c3259a75748/page.htm">http://iso.shupl.edu.cn/english/2020/0323/c3259a75748/page.htm</a>		



## A pplication Procedures

Please refer to International Student Application Procedure.pdf in the folder for more information, and process your application at: <http://shupl.at0086.cn/StuApplication/Login.aspx>

**Students:** Please check with your home institution for any additional requirements. Submit them to your home institution before your institutional deadline.

**Home institution:** Please notify International Affair Office at SHUPL by email (attention: Incoming Exchange Students) of the names of the students you have nominated for exchange.

## D eadlines

**April 1** for fall semester and full academic year enrollment

**September 1** for spring semester enrollment

## C ontact Us

For more information, feel free to reach out to us at:

**Email:** [shuplgjc@shupl.edu.cn](mailto:shuplgjc@shupl.edu.cn)

**Tel:** +86-021-39220098

