

East China University of Political Science and Law

Information for Incoming International Exchange Students

Academic Year 2019/2020

Index

Part I About East China University of Political Science and Law

1. ECUPL Facts and Figures
2. A Brief Introduction to ECUPL
3. International Exchange Center (International Cultural Exchange School)

Part II Practical Matters

1. Study
 - Introduction to the Courses
 - Daily Course Management
 - Transcript
2. Accommodation
3. VISA
4. Living Expense
5. Insurance

Connect with us

Part I East China University of Political Science and Law

ECUPL Facts and Figures

Year of Establishment: 1952

Location: Two campuses in Shanghai, one in downtown and one in suburb

Total Area: About 870 hectares

Number of Schools and Departments: 18, of which 7 are related to law

Number of Students: About 21,000 of which 500 are international students

Number of Faculty Members: 1,400

A Brief Introduction to ECUPL

Established in 1952, East China University of Political Science and Law (ECUPL) is a multidisciplinary university offering programs in law, economics, management, literature, science and so on, with the discipline of law being the strongest. Boasting 18 Schools and Departments, ECUPL has nearly 1,400 faculty members and more than 21,000 students in total. The University offers a complete education system, including undergraduate, postgraduate and doctoral programs, which, throughout the years, has nurtured more than 100,000 talents of all fields. There are two campuses of the University covering a total area of about 870 hectares: Located in downtown, Shanghai, the Changning Campus was the former campus of the St. Johns University from the United States, therefore the architecture style of which integrates both Chinese and western styles. This campus enjoys both convenient transportation with Metro Line 2, 3 and 4 located nearby and quiet environment given that it is right opposite to Zhongshan Park; the other campus is located in the Songjiang District of Shanghai which was put into use in 2003. The campus is equally beautiful and enjoys a very good environment.

At present, the programs that ECUPL offers for international students are: Doctoral programs in International Law and Legal Historiography; Master programs in Legal Theory, Legal History, Constitutional Law & Administrative Law, Criminal Law, Civil Law & Commercial Law, Litigation Law, Economic Law, Environmental Law, International Law and LL. M.; LL. B.; and non-degree programs in Law and Chinese language.

**International Exchange Center
(International Cultural Exchange School)**

The International Exchange Center (International Cultural Exchange School) is the major body overseeing international cooperation and exchange.

Its major functions are:

- Process student exchange agreement
- Discuss the number of exchange students per semester with partners
- Handle the admission of students
- Assist exchange students in finding suitable accommodation
- Provide students with orientation
- Provide registration services (including: VISA, insurance, student card etc.)
- Arrange student orientation
- Give assistance in course selection
- Assist communication on academic affairs
- In charge of communication when emergencies occur
- Organize activities for exchange students
- Send transcripts and performance reports to home university.

Part II Practical Matters

An Exchange Student is defined as an Exchange Program applicant from a university which has signed Student Exchange Agreement with the East China University of Political Science and Law. Every exchange student shall abide by the rules and regulations set by ECUPL when studying here.

1. Study

The student exchange program follows a cycle of one semester. Every exchange student may select up to 5 courses and 20 credits based on their personal study plan. In case that an exchange student has to study more than five courses according to the study plan, his or her home university shall get consent from ECUPL when nominating the student.

---Introduction to the Courses

In principle, all the courses of ECUPL will only be open to the exchange students in the same major and at the same level as the course requires. Elementary Chinese language program is designed for beginners, while there will be an entrance examination for Intermediate and advanced level Chinese language programs.

To attend English taught courses, students need to get IELTS 6.0 or give proof that they have achieved the same level.

a. Chinese Language Courses

Course Name	ECUPL Credit	Teaching hours	Semester
Comprehensive Chinese, Elementary Chinese	12	216	Spring, fall
Listening, Elementary Chinese	4	72	Spring, fall
Elementary Chinese Reading	4	72	Spring, fall
Elementary Spoken Chinese	4	72	Spring, fall

Intermediate Chinese Listening	4	72	Spring, fall
Comprehensive Chinese, Intermediate Chinese	12	216	Spring, fall
Intermediate Chinese Reading	4	72	Spring, fall
Intermediate Spoken Chinese	4	72	Spring, fall
Basic Chinese	3	54	Fall
Business Chinese (1&2)	3	54	Spring, fall
Legal Chinese	3	54	Spring

© Please be noted that this is subject to changes.

b. Legal Courses Taught in English

Course Name	ECUPL Credit	Teaching hours	Semester
Chinese Law	2	36	Fall
Commercial Law	2	36	Fall
Corporation Law & Securities Law	3	54	Fall
Civil Law	2	36	Fall
World Trade Organization Law	3	54	Fall
Chinese Legal System	2	36	Fall
Contract Law	2	36	Fall
Procedural Law & Commercial Arbitration	3	54	Spring
International Trade Law	2	36	Spring
Intellectual Property Law	2	36	Spring
International Investment Law	3	54	Spring
Chinese Legal System	2	36	Spring

c. Business Courses Taught in English

Course Name	ECUPL Credit	Teaching hours	Semester
Enterprise Economy	2	36	Fall
International Economy	2	36	Fall

International Business	2	36	Fall
Marketing	3	54	Fall
Enterprise Strategy	3	54	Fall
International Settlement (1&2)	2	36	Spring, fall
Accountancy	3	54	Fall
Project Team Management	2	36	Spring
Finance	3	54	Spring
Macroeconomics	2	36	Spring
National Economy	3	54	Spring
Enterprise Operation	2	36	Spring
Financial Market & Regulation	3	54	Spring
Pricing	2	36	Spring
Econometrics	3	54	Spring

d. Culture Courses Taught in English

Course Name	ECUPL Credit	Teaching hours	Semester
Introduction to Chinese Culture	2	36	Fall
Chinese Culture & Chinese Legal Culture	3	54	Fall
Chinese Society & Economy	3	54	Spring
An Outline of Chinese Economy	2	36	Fall

An exchange student whose Chinese language proficiency reaches new HSK5 level can participate in courses taught in Chinese. In addition, each semester, there might be some short-term courses that will be open to exchange students.

The above course arrangement is only for reference and will be subject to changes according to specific conditions in each semester. The final and actual course arrangement made at the beginning of each semester shall

prevail.

--Daily Course Management

Every exchange student, once having selected the courses, shall study the courses carefully in line with ECUPL academic rules and regulations. The specific requirements on and examination arrangement of the courses shall follow ECUPL examination regulations.

--Transcript

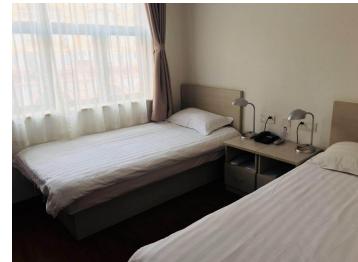
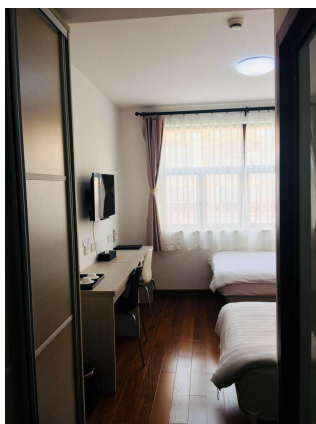
Transcripts of Fall Semester will be issued in March next year, and that of Spring Semester will be issued in September in that very year. The original transcript will be sent directly to relevant department of the exchange student's home university. If an exchange student needs to get his or her transcript in advance, he or she shall submit this request when handing in Course-selection Confirmation Sheet.

If any dispute arises on grades or credits, the International Exchange Center (International Cultural Exchange School), after getting confirmation from the professor teaching this course, will have the updated transcript sent to the relevant department of the student's home university in time.

2. Accommodation

Based on the Student Exchange Agreement, East China University of Political Science and Law will give exchange students assistance in finding suitable accommodation including a limited number of on campus dormitories. In every July and January exchange students can submit application to student exchange program coordinator for dormitories according to the information provided by the University. ECUPL will arrange accommodation based on the time sequence of the applications, but will not guarantee that all applicants can live on campus.

- Located close to the Business area near Zhongshan Park and Jing'an CBD and closely neighboring to Metro Line 2, 3 & 4, ECUPL **Changning Campus** has on-campus dormitory building for overseas students where there is a laundry room and a public activity area.
- **Guest House** is a hotel style student dorm.
 - ◆ Price of Guest House: RMB 1500 per month(shared room price of 2018 spring) for a twin beds room.
 - ◆ Please note that the above prices do not include fees for electricity and internet.
 - ◆ At least four months lease. Applicants need to prepay the room prices for four months.
 - ◆ Application in July via go@ecupl.edu.cn
 - ◆ Application will be arranged each semester
 - ◆ Address: Guest House (华谊楼), No 1575 Wanhangdu Rd.



**Photo of Guest House
Shared Room**

3. VISA

With the documents issued by the ECUPL, students should apply for an entry visa of [X1](#) or [X2](#).

[X1](#) visa is issued to those intending to study in China for a period of more than 180 days. Applicants shall provide all the supporting documents accordingly as per required.

Supporting documents:

1) Original and photocopy of the Admission Letter issued by a school or other entities in China.

(2) Original and photocopy of “Visa Application for Study in China” (Form JW201 or Form JW202).

We kindly remind you that:

Holders of X1 Visa shall, within 30 days from the date of their entry, apply to the exit/entry administrations of public security organs under local people’s governments at or above the county level in the proposed places of residence for [foreigners’ residence permits](#).

[X2](#) visa is issued to those intending to study in China for a period of no more than 180 days.

Supporting documents to get X2 visa are original and photocopy of Admission Notice issued by a school or other entities in China.

We kindly remind you that:

Applicants for X2 visa shall consult local Chinese Embassy as per required or check on Internet for details via <http://www.visaforchina.org> before [submission](#).

4. Living Expenses

Based on the Agreement, exchange students are exempted from paying tuition fee, but will shoulder all the transportation, VISA, communication, living, teaching materials, experiment fees and medical insurance premiums arising from the exchange program.

Please note that there WILL NOT be scholarships available to exchange students during their study in ECUPL.

Shanghai is a vibrant city. Living cost varies with the student's life style. We suggest that every exchange student reserve RMB 5000RMB per month for living expenses. Below is an example of possible living expenses:

- ✓ Accommodation fee for a single-bed room on Changning Campus:
RMB 1400 per month
- ✓ A SIM card with 30-minutes communication fee: RMB 50
- ✓ A subway ticket: RMB 3-9
- ✓ A Mcdonald's set meal: RMB 30
- ✓ A cup of Starbucks Coffee (tall size): RMB 30
- ✓ A ticket for a movie newly on: RMB 80
- ✓ A student ticket for a concert or a sports event: RMB 200

5. Insurance

As stipulated by the Ministry of Education of the People's Republic of China, all international students in China shall obtain medical insurance, the duration of which must cover the whole period of study. Exchange students shall provide proof of insurance covering the duration of the exchange period bought in their homelands; otherwise, they must purchase medical insurance in ECUPL, which will cost RMB 800 per year or RMB 400 per semester.

Official Website:

<http://www.lxbx.net/> (Chinese)

<http://www.lxbx.net/lxbx-eng.html> (English)

Connect with us

University Address

In Chinese:

松江校区：松江大学园区龙源路 555 号邮编：201620

长宁校区：万航渡路 1575 号 邮编：200042

In English:

Songjiang Campus: No. 555 Longyuan Road, Songjiang University Town,
201620 Shanghai

Changning Campus: No. 1575 Wanghangdu Lu, 200042 Shanghai

Official Website

Website in Chinese: <http://www.ecupl.edu.cn/>

Website in English: <http://study.ecupl.edu.cn/>

Program Coordinator

Ms. TIAN Hua (Helene TIAN)

International Exchange Center

(International Cultural Exchange School)

Tel: 0086-21-62071025

Email: tianhua@ecupl.edu.cn