

Figure 1: Relative Mode of Transport Pie Chart

Percentage of Austrian leisure travelers who chose between Air and Land modes of transport for respective years.

Note: * Land mode of transport also includes Shipping but this number is very small and hence negligible

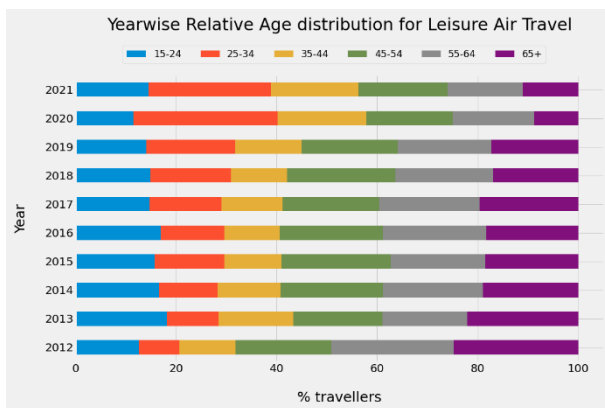


Figure 2: Horizontally stacked Relative Year-wise Traveller's Age Graph

Relative Percentage of Austrian leisure travelers from respective age groups for each year from 2012 - 2021

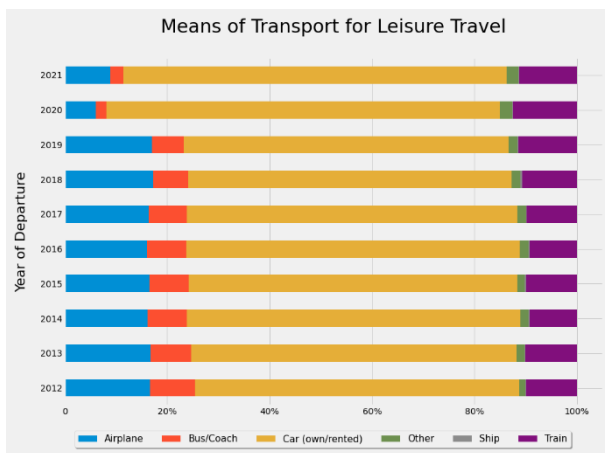


Figure 3: Horizontally stacked Relative Year-wise Means of Transport

Relative Percentage of Austrian leisure travelers representing their choice for Means of Transport for each year from 2012 - 2021

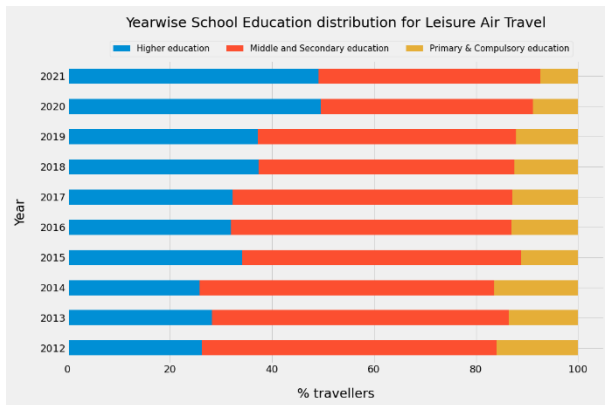


Figure 4: Horizontally stacked Relative Year-wise Traveller's School Education level

Relative Percentage of Austrian leisure travelers divided as per School Education level for each year from 2012 - 2021