

# Towards Meaningful Foundation Models for Biology



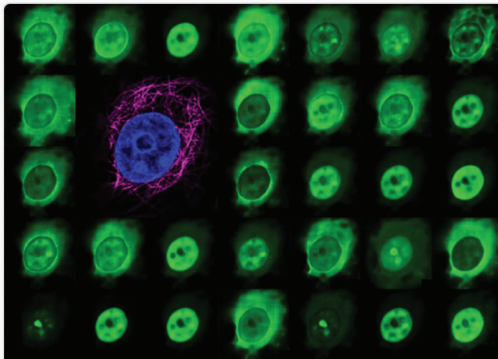
Speaker: Alex Lu, Microsoft Research New England  
Cambridge, MA, USA

Date: **May 13th, 2024 (Monday)**

Time: **13:00 (1 PM)**

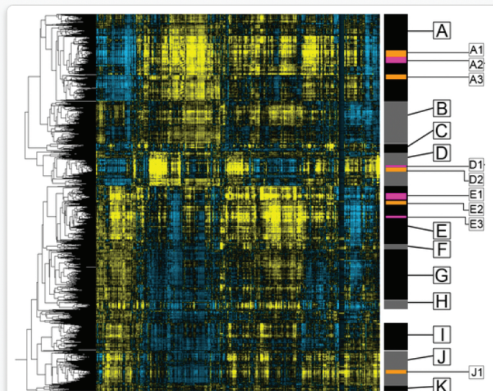
Location: HS 3.1, Petersgasse 12/EG  
TU Graz

Join to explore cutting-edge insights  
& participate in engaging discussions!



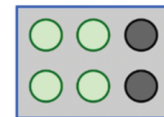
## SELF-SUPERVISED LEARNING

Self-supervised representation learning produces unbiased representations of biology

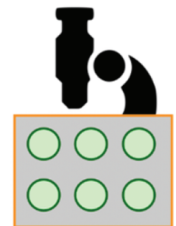


## BIOLOGICAL HYPOTHESIS DISCOVERY

Visualization and interpretation discovers biological hypotheses



Training Dataset



Test Dataset  
Images from different microscope

## ROBUST MODELS

How do we build models that ignore non-biological variation?