



Lunchtime Lecture

16.12.2020, 12:00 (s. t.)

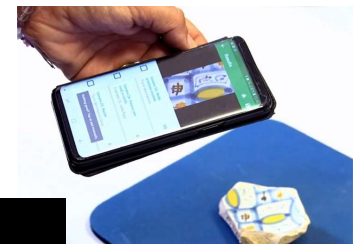
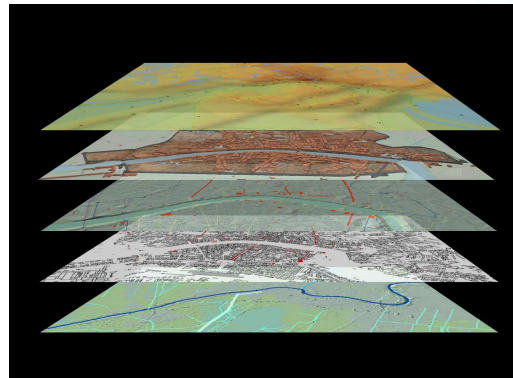
UniMeet-Link: <https://unimeet.uni-graz.at/b/ble-6et-ntd>

Dott.sa Francesca Anichini and Dr. Gabriele Gattiglia
MAPPALab - University of Pisa

Digital archaeological data and research challenges

Abstract

Datification, data management, data analysis and more in general archaeological data are the core research fields of the MAPPALab of the University of Pisa. This talk presents two of the main challenges the MAPPALab dealt with: mathematical applications in urban archaeology (MAPPA project), and AI for automatic recognition of pottery (ArchAIDE project).



Francesca Anichini is one of the founders of MAPPALab at the University of Pisa, where she has been working since 2010. Her research interests cover methodological issues, archaeological open data and communication, urban and contemporary archaeology.



Gabriele Gattiglia is an Assistant Professor in Archaeological Method and Theory at the University of Pisa. His fields of interest are data analysis, urban archaeology, GIS, open data, and Artificial Intelligence applications in Archaeology.