



ADAPTING & DESIGNING MATERIALS FOR CLIL

Anita Lämmerer & Achilleas Kostoulas
(Fachdidaktik Anglistik)

Overview

- Reflect on what CLIL is, focusing on the balance of content and language.
- Practice adapting and creating dual focus materials.
- Demonstrate the use of technological media that can be used in class.

<https://answer garden.ch/584528>



What does CLIL
mean for you?

What is CLIL?

“Content and Integrated **language** learning is a **dual-focused** educational approach in which **an additional language** is used for the learning and teaching of **both content and language**. [...] there is a focus not only on content, and not only on language. Each is **interwoven**, even if the emphasis is greater on one or the other at a given time.”

Jane meets her neighbour

Distance (y-axis)

m/s



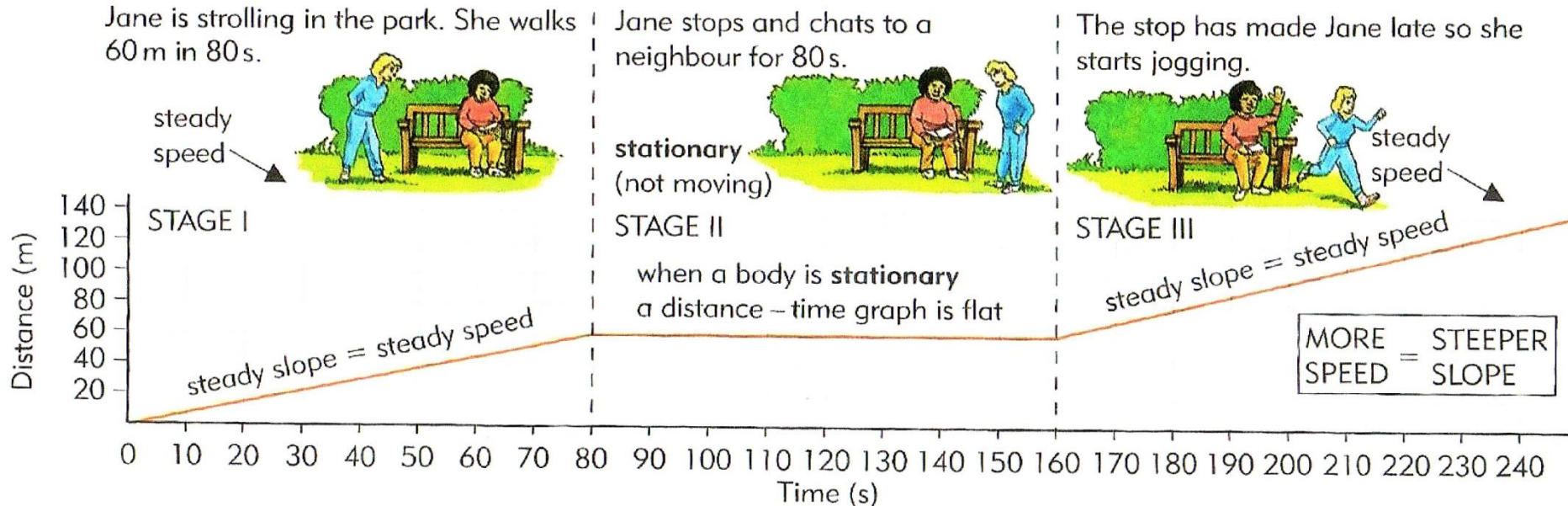
She is strolling



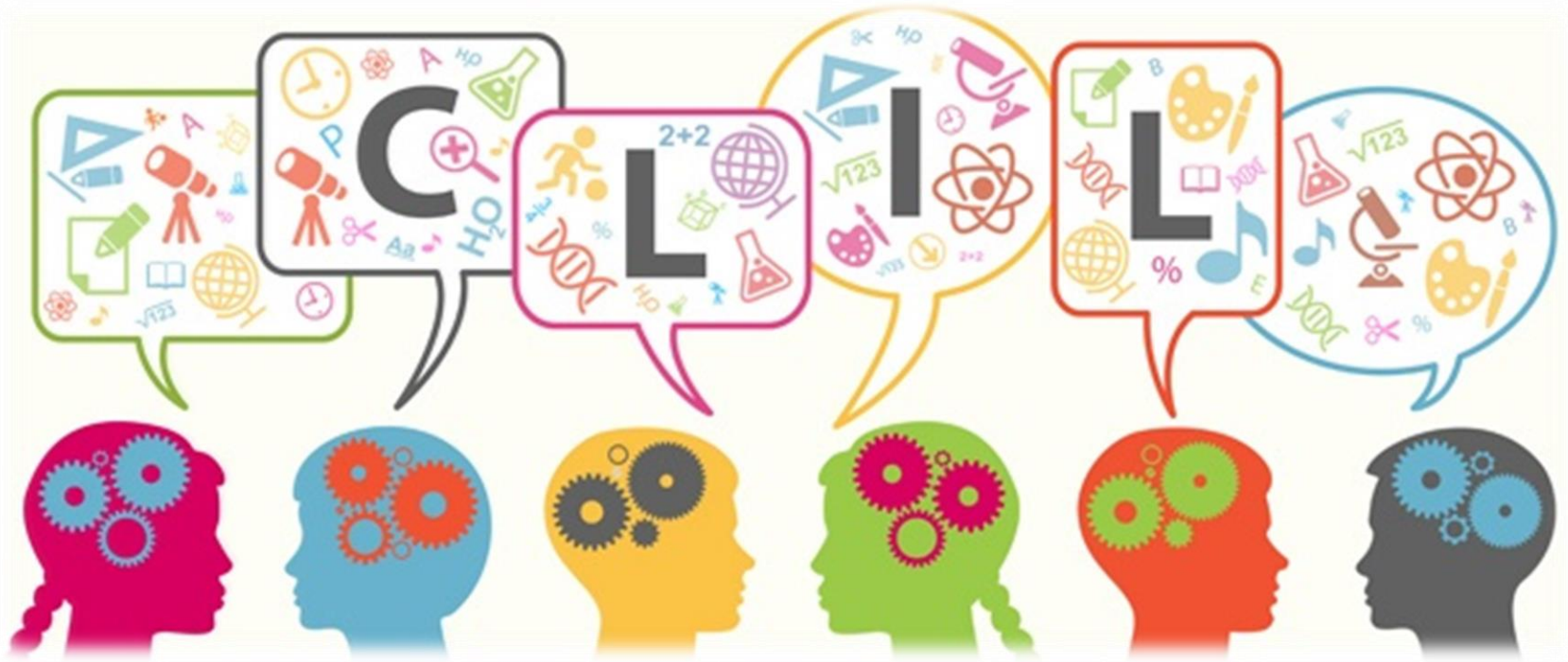
She starts jogging

time (x-axis)

CLIL Physics (Year 2 - Speed)



- **physics focus:** measuring speed; calculating speed & velocity
- **language focus:** vocabulary for movement; story writing; comparison & superlatives



PUTTING CLIL INTO PRACTICE

Adapting CLIL materials

- Look at the materials with which you have been provided.
- Discuss:
 - In what subject combination might you use them?
 - What class are they appropriate for? Why?
 - What knowledge (content & language) do they presuppose?
- Decide how balanced these materials seem.
- Create a follow-up activity that helps to make these materials more balanced for CLIL.

Discussion

- What opportunities does CLIL present in your teaching situation?
- What challenges do you think you might face in designing materials for CLIL?
- Do you know of any useful resources that can be used for CLIL?



**Thank
You!!!**

Questions? Feedback?

Anita Lämmerer: anita.laemmerer@uni-graz.at

Achilleas Kostoulas: achillefs.kostoulas@uni-graz.at

www.thebodytransformation.com